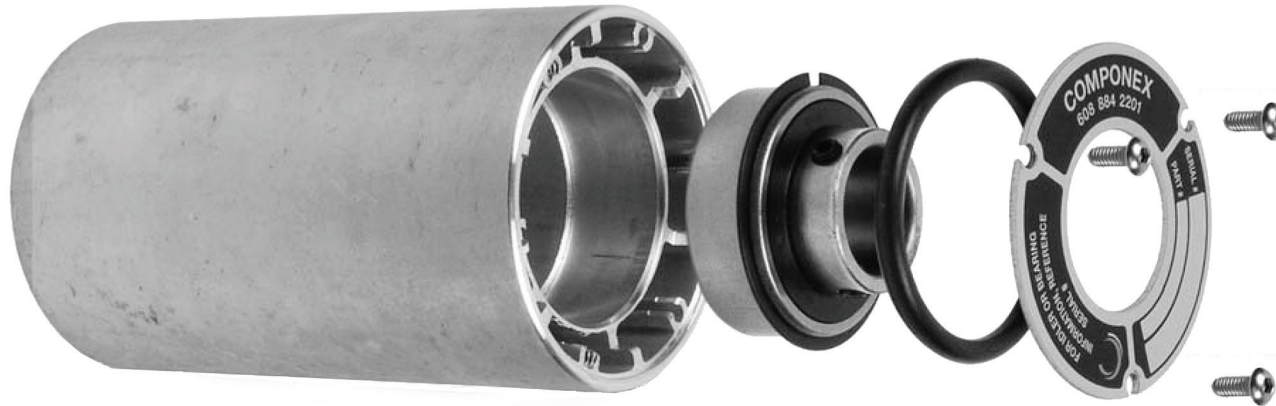


WINLOCK BORE - Exploded View



LOCKS IN BEARINGS

When the end cap is bolted on, it presses the o-ring against the bearing ring clip securing the bearing in place.

LOCKS OUT DIRT

When assembled, the end cap covers the bearing and fits very close to the extended race of the bearing. This helps to prevent dirt from entering the free spin bearing.



DIMENSIONS

Bearing is recessed as far as possible without losing access to the setscrews. (Also available with the acculoc bearings. Allow an extra .075" clearance.)

Roll face to bearing end:
1.0" = .335"
1.5" = .528"

